

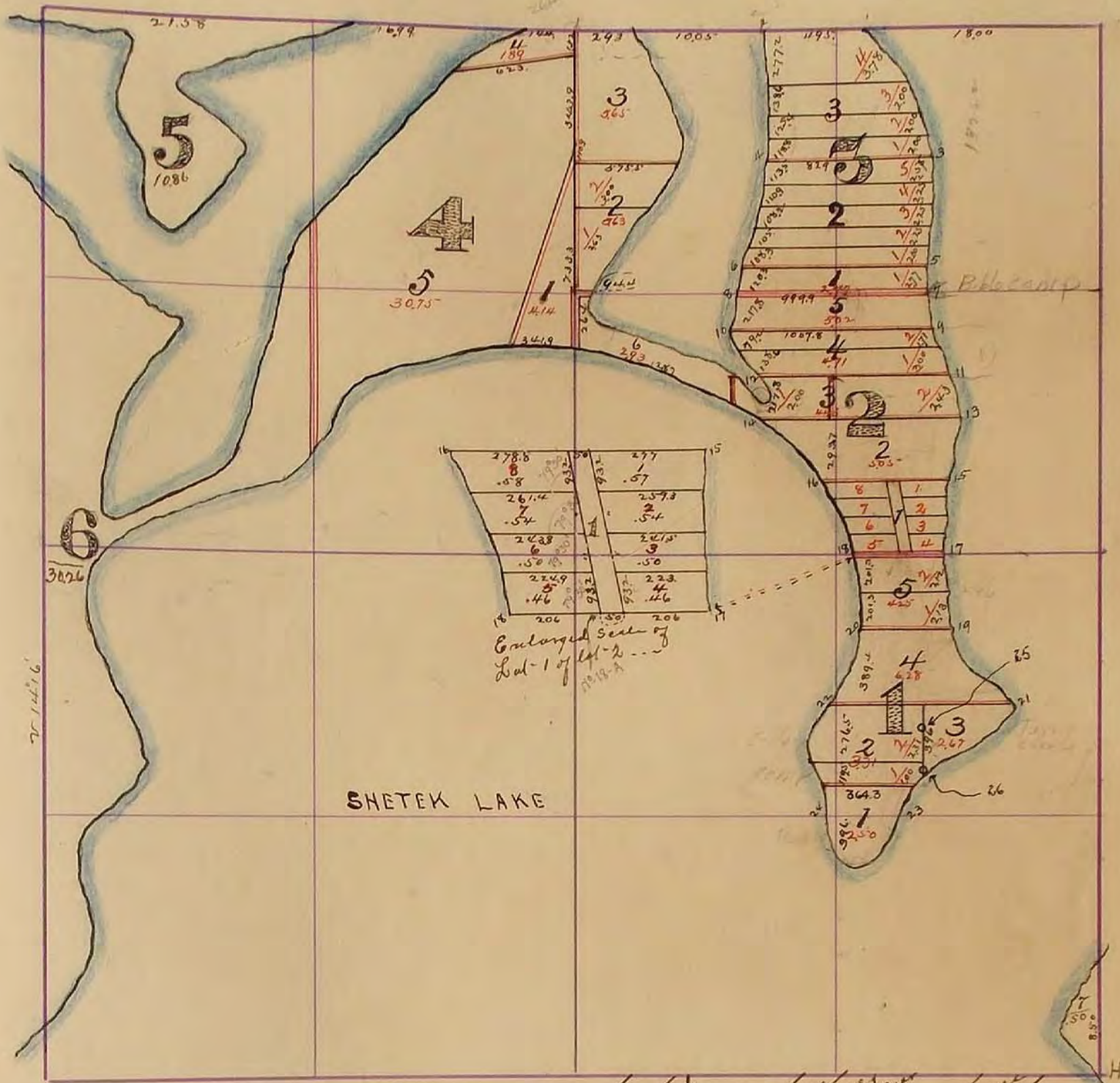
# MURRAY COUNTY.

Section 1

Township 107

Range 41

10798 McGill-Warner Co., Blank Book Manufacturers, St. Paul.



Field Notes No.	Kind of Tree	Section in Diameter	Corner they are	Distance	No	Kind of Tree	in Diameter	Corner they are	Distance
1	Gov Meander post				20	Oak	10	Corner	
2	Ash	8	S. 40 E.	.28	21	"	21	"	
3	Ash	6	S. 10 W.	.32	22	"	4	N. 55 E.	.25
4	Oak	8	N. 10 W.	.23	23	Willows in Lake			
"	"	12	S. 61 E.	.28	24	Oak	12	Corner	
"	"	10	S. 70 W.	.35	25	145' South of South Line of Lot 4 of Lot 1			
5	Oak Stump	24	N. 40 W.	.10		R.P. Tack in Blazed Elm East 50'			
6	Ash	6	N. 28 E.	.27		R.P. Tack in Blazed Ash South 31 E			
7	Ironwood	15	S. 42 E.	.30	26	250' South of South Line of Lot 4 of Lot 1			
8	Oak	10	N. 30 W.	.30		R.P. Tack in Blazed Elm East 40'			
9	Oak	24	S. 23 W.	.36		R.P. Tack in Box Elder North 6 E			
10	Dead Elm	5	N. 50 W.	.37		R.P. Tack in Blazed Ash NW. 20 E			
11	Elm	18	S. 40 E.	.55					
12	Ash	28	Corner						
13	Cluster of Cottonwoods on stump	10	Corner						
14	Willow East	2	Corner						
15	Oak	8	S. 15 W.	.14					
16	Ash	15	Corner						
17	Ironwood	10	Corner						
18	Crotched Oak								
19	Post								

1  
2  
3  
4  
5  
6  
7  
8  
9  
10  
11  
12  
13  
14  
15  
16  
17  
18  
19  
20  
21  
22  
23  
24  
25  
26  
27  
28  
29  
30  
31  
32  
33  
34  
35

SURVEY No. 1

Section 1 Town 107 Range 41



May 22 23 24 25 1876.

S. S. ...

...

Mag. Variation 11.50' east

FIELD NOTES.

Explanation of Plot.

Government lines in red ink thus \_\_\_\_\_  
 No. of lot ...  
 Subdivision lots marked thus ...  
 Number of acres ...  
 Corners marked on plot by numbers, thus 1, 2, 3, 4, 5, etc.  
 Bearing trees marked by cross and tree hooks thus; X

Corners Bearing Trees at  
 1. Government mound or post has

- 2. W. Ash 2 in dia. 340° 28 ch
- 3. W. Ash 6 . . . 310° 32 ch
- 4. Oak 8 . . . 210° 23 ch  
Oak 12 . . . 361° 28 ch
- 5. Mill race corner west 29 ch from  
main race  
Oak stump 24 in dia 10/11. 10 ch  
Iron Hoe 16 . . . 320° 33 ch
- 6. W. Ash 6 in dia 1128° 27 ch  
W. Ash 15 . . . 324° 26 ch
- 7. Iron Hoe 10 in dia 136° 20 ch  
Oak 24 . . . 823° 36 ch

- 8. W. Ash 5 in dia 118° 37 ch  
W. Ash 11 . . . 340° 55 ch
- 9. Oak 25 in dia. for corner  
(Struck by lightning)
- 10. W. Ash 10 in dia for corner
- 11. Dead Elm 2 in dia for corner  
Elm 15 in dia 19 ch
- 12. W. Ash 15 in dia for corner
- 13. Cluster of Yellow Wood on stump  
for corner.
- 14. Corner in Lake 32 ch west  
of Mill race

- 15. Oak 24 in dia 830° 37 ch  
Oak 30 . . . 1015° 44 ch
- 16. W. Ash 6 in dia North 18 ch
- 17. Post
- 18. Iron Hoe 10 in dia 118° 37 ch
- 19. Post
- 20. Oak 10 in dia for corner
- 21. Oak 11 in dia for corner
- 22. Oak 6 in dia 375° 6 20 ch  
Oak 7 . . . 1053° 25 ch
- 23. Mill race in Lake
- 24. Oak 12 in dia for corner
- 25. In Water
- 26. 74 Iron post
- 27 28 Iron mound or post
- 29. Post - not over convenient to mark
- 30. W. Ash at Mill race corner 6 in dia on  
line 1077° 53 ch
- 32. W. Ash 6 in dia 365° 59 ch
- 34. Oak 6 in dia 1120° 55 ch
- 35. Mill race corner 20 ch 1017° from  
which all set 10 in dia 1120° 36 ch
- 36. Mill race corner Mill race 4 in dia 1020°
- 38. W. Ash for corner by stump at roots
- 39. Post
- 40. W. Ash 6 in dia for corner
- 37. Post

- 41. Ash 5 in dia 335° 05 ch  
Subdivisions of Subsection  
The line marked  
The No. of lot 1, 2, 3, 4  
The No. of acres 3, 1.75, etc.
- 42. Post at corner  
W. White Oak 6 in dia 34° W  
100 in W. White Oak 10 in  
348° 51 ch
- 43. Post at W. Corner 15 ch W  
W. Baywood 3 in dia 55°  
03 ch
- 44. Post  
W. T. Elm 50 in dia 310°  
Elm 15 in dia 118°
- 45. Post with W. T.  
Iron Hoe 50 in dia 118°
- 46. Elm for corner with  
Elm 15 in dia 19 ch  
Oak 540° 2 in dia 10 ch
- 47. Baywood for corner  
Oak 15 in dia 324° 26 ch
- 48. W. Ash for corner  
Oak 12 in dia 361° 28 ch
- 49. Iron Hoe 10 in dia 118° 37 ch